

Notice to Mariners

Vessels & General Safety Advice

Scottish Hydro Electric Power Distribution (SHEPD)

ED2 Campaign 4 Subsea Inspections

Date of Issue: 5th May 2026

PROJECT OVERVIEW

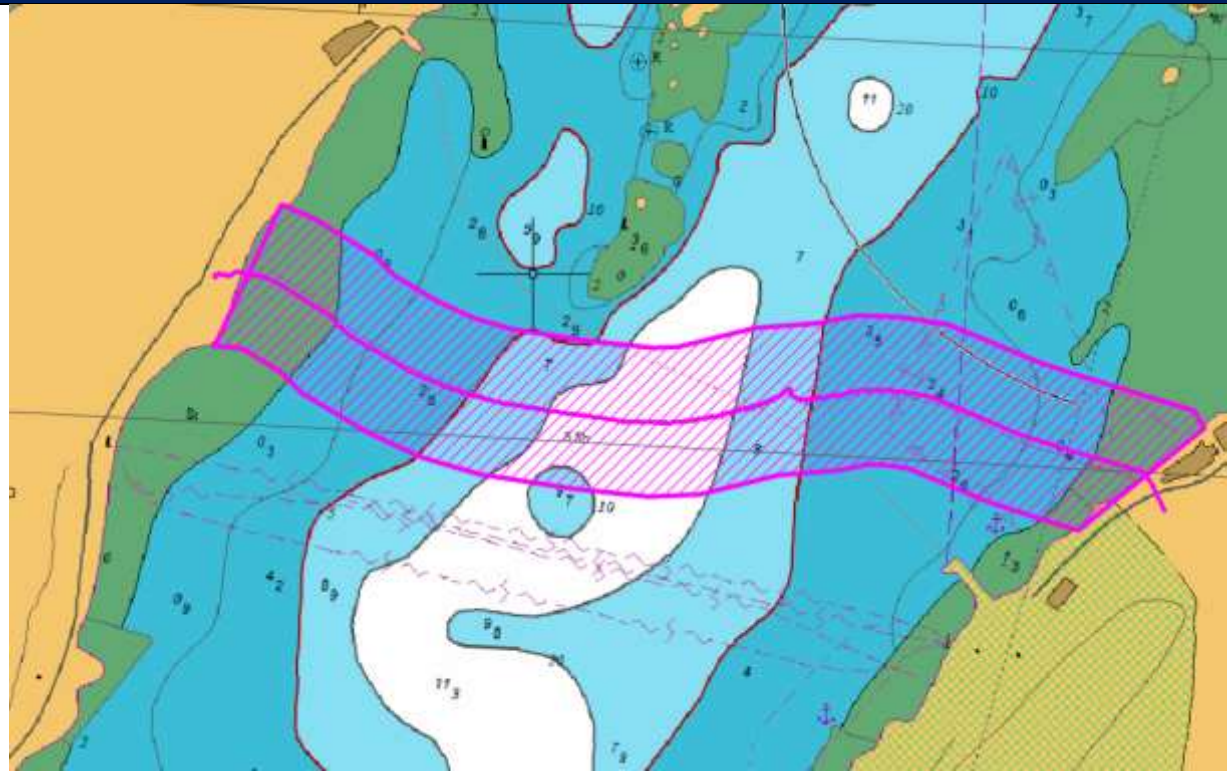
Please be advised that Socotec Land & Hydrographic Surveys (on behalf of SHEPD) will be undertaking subsea inspections across the Argyll & Bute Marine area. Please refer to Figure 1 - Figure 5 that highlights each cable location.

Given the different conditions and water depths anticipated at each site, a range of vessels will be available for the project, detailed overleaf.

The inspection works will be centred on a 50m cable corridor, defined by the start and end coordinates listed in Table 1.

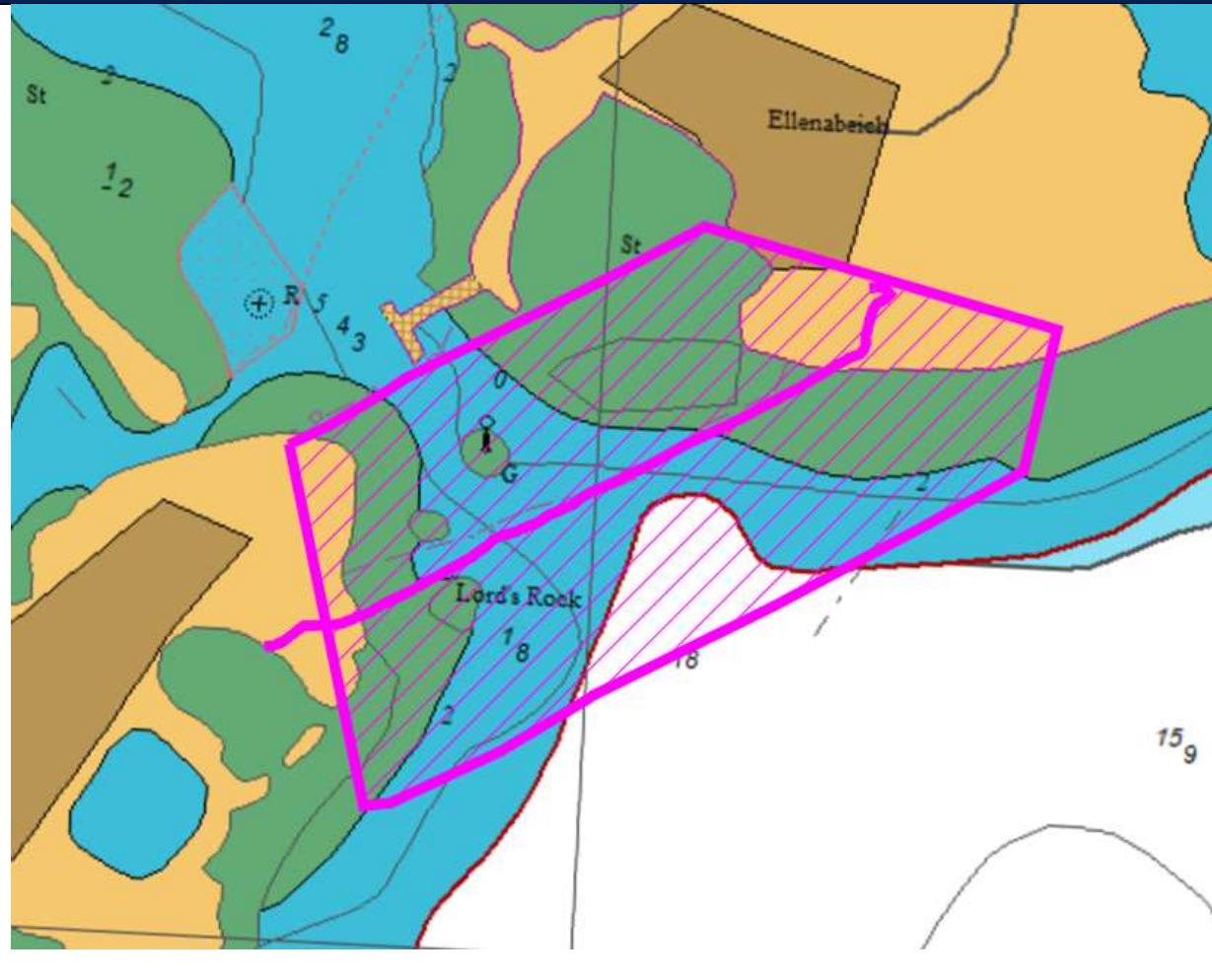
Circuit ID	Cable Name	Start Point		End Point	
		Latitude [WGS 84]	Longitude [WGS 84]	Latitude [WGS 84]	Longitude [WGS 84]
SHEPD_90	Mainland - Lismore	56° 33.264N	5° 24.646W	56° 33.409N	5° 25.906W
SHEPD_128	Seil - Easdale	56° 17.603N	11° 38.863W	56° 17.491N	11° 39.175W
SHEPD_57	Mull - Iona	56° 28.928N	6° 8.955W	56° 28.874N	6° 9.242W
SHEPD_80	Mull - Ulva	56° 20.427N	6° 21.470W	56° 20.497N	6° 23.124W
SHEPD_136	Bridgend, Islay	55° 45.658N	6° 16.367W	55° 46.914N	6° 16.637W

TABLE 1 - CABLE LOCATIONS & COORDINATES

Circuit ID & Location: SHEPD_90 – Mainland - Lismore


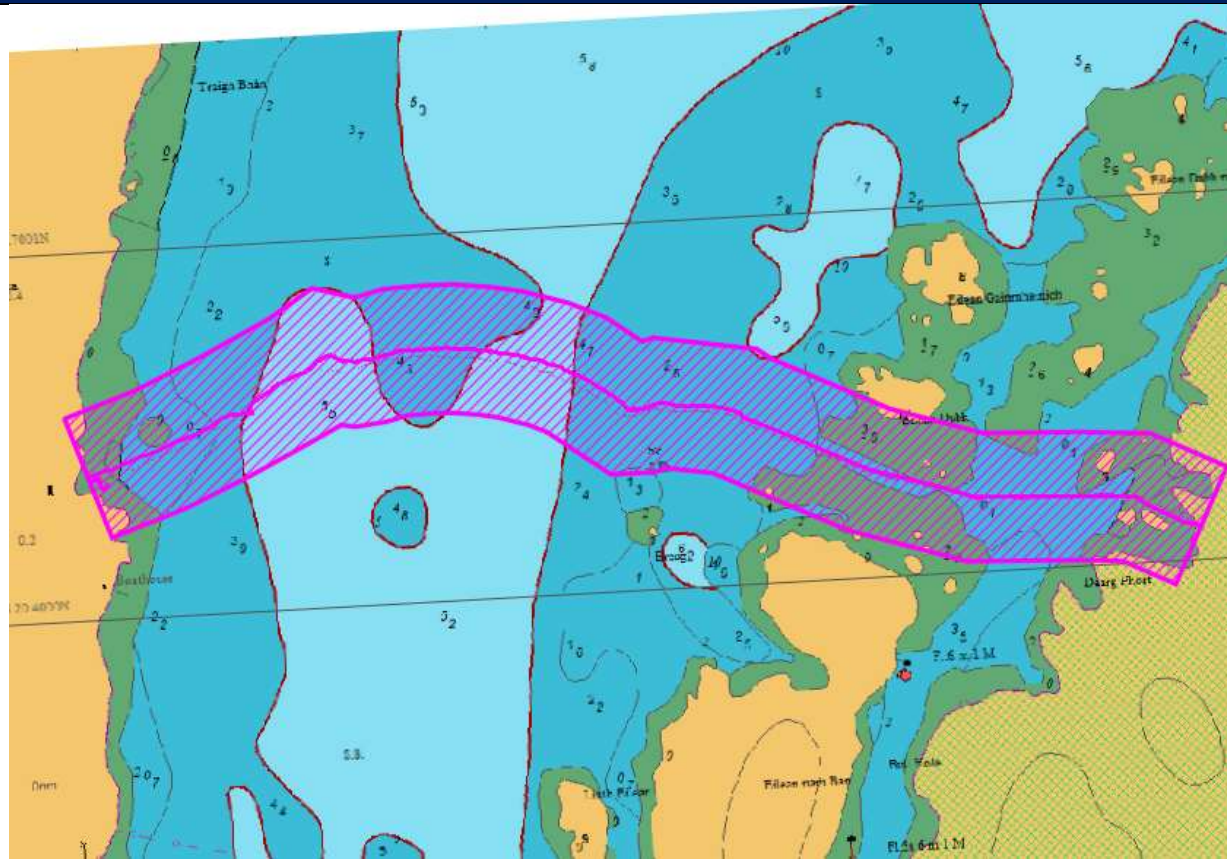
Proposed Dates	Vessel Scope	Vessel(s)
28/04/2026 – 01/07/2026	Underwater Cable Inspection	Proteus Remote Sensor Marine Sensor Coastal Sensor Coastal Sensor (II)

Figure 1 – SHEPD_90 – Mainland - Lismore

Circuit ID & Location: SHEPD_128 – Seil - Easdale


Proposed Dates	Vessel Scope	Vessel(s)
28/04/2026 – 01/07/2026	Underwater Cable Inspection	Proteus Remote Sensor Marine Sensor Coastal Sensor Coastal Sensor (II)

Figure 2 – SHEPD_128 – Seil - Easdale

Circuit ID & Location: SHEPD_57 – Mull – Iona


Proposed Dates	Vessel Scope	Vessel(s)
28/04/2026 – 01/07/2026	Underwater Cable Inspection	Proteus Remote Sensor Marine Sensor Coastal Sensor Coastal Sensor (II)

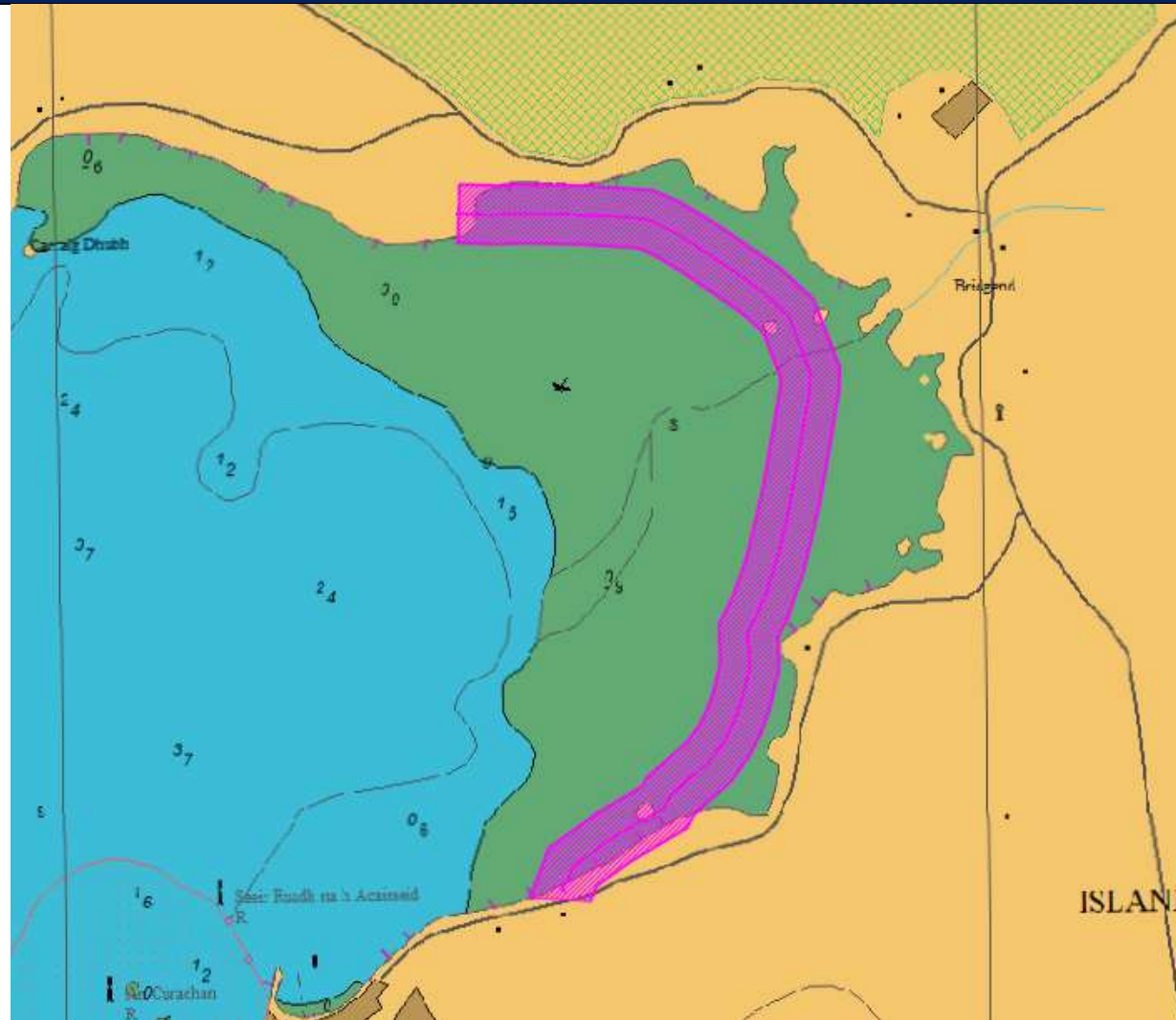
Figure 3 – SHEPD_57 – Mull – Iona

Circuit ID & Location: SHEPD_80 – Mull – Ulva



Proposed Dates	Vessel Scope	Vessel(s)
28/04/2026 – 01/07/2026	Underwater Cable Inspection	Proteus Remote Sensor Marine Sensor Coastal Sensor Coastal Sensor (II)

Figure 4 – SHEPD_80 – Mull – Ulva


Circuit ID & Location: SHEPD_136 – Bridgend



VESSEL DETAILS

The vessel conducting the works will be restricted in its ability to manoeuvre and will display the appropriate lights and shapes.

Other vessels are requested to pass at a safe speed and provide a minimum clearance of 500m (COLREGs Rule 16 & 18) during marine operations.

The vessel will monitor VHF Channel 16 throughout survey operations. Mobile contacts for the vessel are listed at the end of this NtM.

Vessel Photo	Vessel Description
	<p>Proteus LOA: 14m Beam: 4.96m Draft: 1.3m Call Sign: 2HBL7 MMSI No: 235102268 VHF: 16</p>

Vessel Photo	Vessel Description
	<p>Remote Sensor LOA: 8.2m Beam: 2.9m Draft: 0.3m Call Sign: MQAM3 MMSI No: 235052176 VHF: 16</p>

Vessel Photo	Vessel Description
	<p>Marine Sensor LOA: 6.9m Beam: 2.5m Draft: 0.3m Call Sign: MLLR2 MMSI No: 235033255 VHF: 16</p>

Vessel Photo	Vessel Description
	<p>Coastal Sensor LOA: 6.1m Beam: 2m Draft: 0.3m Call Sign: 2BRB2 MMSI No: 235068593 VHF: 16</p>

Vessel Photo	Vessel Description
	<p>Coastal Sensor II LOA: 6.5m Beam: 2m Draft: 0.3m Call Sign: MAMM2 MMSI No: 232005897 VHF: 16</p>

CONTACT DETAILS

Vessel management contact details are given in the table below.

Name & Designation	Organisation	Contact Number	Email
Stephen Scott Project Manager	Socotec Land & Hydrographic Surveys	01294 313 399 07818 670 249	stephen.scott@socotec.co.uk
Andrew McCormick Fleet Manager	Socotec Land & Hydrographic Surveys	01294 313 399 07796 171 320	andrew.mccormick@socotec.co.uk
Scott Norman HSEQ Manager	Socotec Land & Hydrographic Surveys	01294 313 399 07436 065 198	scott.norman@socotec.co.uk
Craig Stephenson Technical Manager	Socotec Land & Hydrographic Surveys	01294 313 399 07780 977 568	craig.stephenson@socotec.co.uk
General Office	Socotec Land & Hydrographic Surveys	01294 313 399	lhs@socotec.co.uk

FISHING LIAISON OFFICERS (FLOs)

Fishing liaison for the survey operations will be co-ordinated by Brown and May Marine (BMM). For any commercial fishery queries please contact the Company Fishing Liaison Officer (CFLO) Alex Winrow-Giffin (07760 160039 / alex@brownmay.com).

The vessel master will issue regular broadcasts whilst survey works are ongoing to ensure minimal disruption and that vessels maintain an appropriate and safe distance.

The local Fishing Industries Representative (FIR) is George White who can be contacted via 07761 873 965, georgewhite0@gmail.com and will also be in place to liaise with the vessels and fishing operations in the area.

Argyle & Bute Council operate the Ellenabeich – Easdale local ferry and can be contacted on 01852 300794.

Seafari Wildlife tours (www.seafari.co.uk/oban) run local wildlife tours in the vicinity and can be contacted on 01852 300003.

DISTRIBUTION LIST

The Distribution List of the Notice to Mariners is as per the stakeholder list in the SHEPD Fisheries Liaison and Management Action Plan (FLMAP).